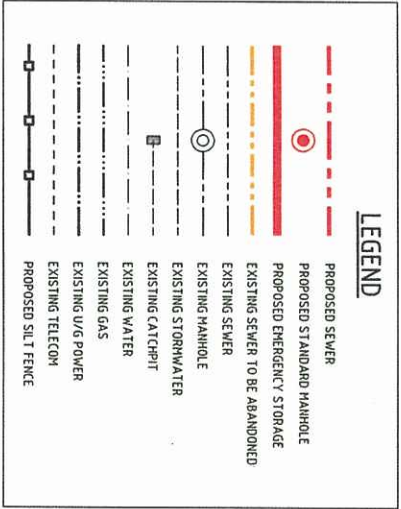


### LOCATION PLAN

N.T.S.



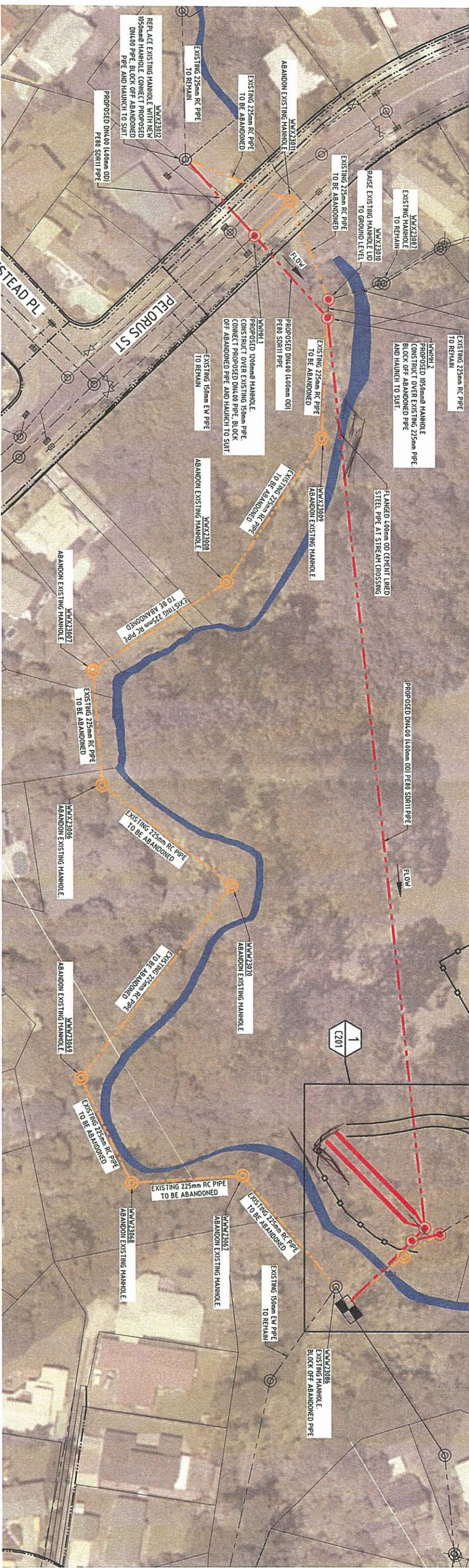
### LEGEND

### SETOUT COORDINATES

ITEM	MI	ME
WMX23012	695091.80	446895.63
WMX23011	695113.27	446878.37
WMX23010	695138.58	446882.20
WMX23009	695114.13	446890.34
WMX23008	695142.36	446884.63

### NOTES

1. THESE DRAWINGS FORM PART OF THE CONTRACT DOCUMENTS FOR THE WORK AND SHALL BE READ IN CONNECTION WITH THE SPECIFICATION AND ALL OTHER CONTRACT DOCUMENTS.
2. DO NOT SCALE THE DRAWINGS.
3. COORDINATES ARE IN TERMS OF MT EDEN CIRCUIT 2000. ORIGIN OF LEVELS IS IN TERMS OF MOTURAKI DATUM.
4. ALL WORK IS TO BE IN ACCORDANCE WITH MCL DEVELOPMENT MANUAL, VOLUME 3, STANDARD TECHNICAL SPECIFICATIONS.
5. PIPES, CABLES AND OTHER UTILITIES FOUNDATIONS, LEVELS, REFERENCE MARKS AND OTHER OBSTRUCTIONS INDICATED ON THIS DRAWING ARE BASED ON L.T.M. RECORDS. AVAILABLE RECORD PLANS AND OTHER INFORMATION TO DATE. THE CONTRACTOR SHALL OBTAIN THE LATEST INFORMATION FROM UTILITY PROVIDERS AND CARRY OUT DETAILED EXPLORATORY WORK, TRACKING, LOCKING, PROTECTION, ISOLATION AND ALTERATIONS AS ARE REQUIRED UNDER NZS 3910 CLAUSE 5.13.



NOT FOR CONSTRUCTION

FOR CONSULTATION

Scale: 1:500

Date: 03/03/2010

Sheet No: C200

Rev: B

TE ANAU PARK

SEWER REALIGNMENT

GRAVITY PIPELINE & STORAGE

PLAN



TE ANAU PARK

SEWER REALIGNMENT

GRAVITY PIPELINE & STORAGE

PLAN

SCALE: 1:500

DATE: 03/03/2010

SHEET NO: C200

REV: B

NOT FOR CONSTRUCTION

FOR CONSULTATION

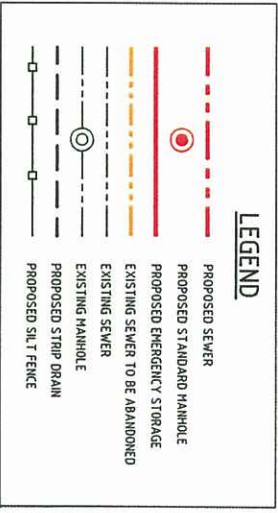
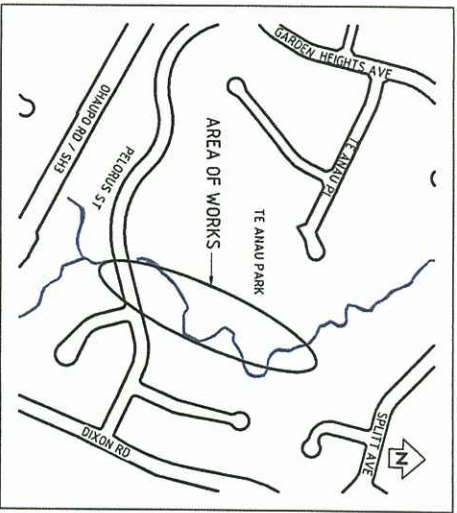
Scale: 1:500

Date: 03/03/2010

Sheet No: C200

Rev: B



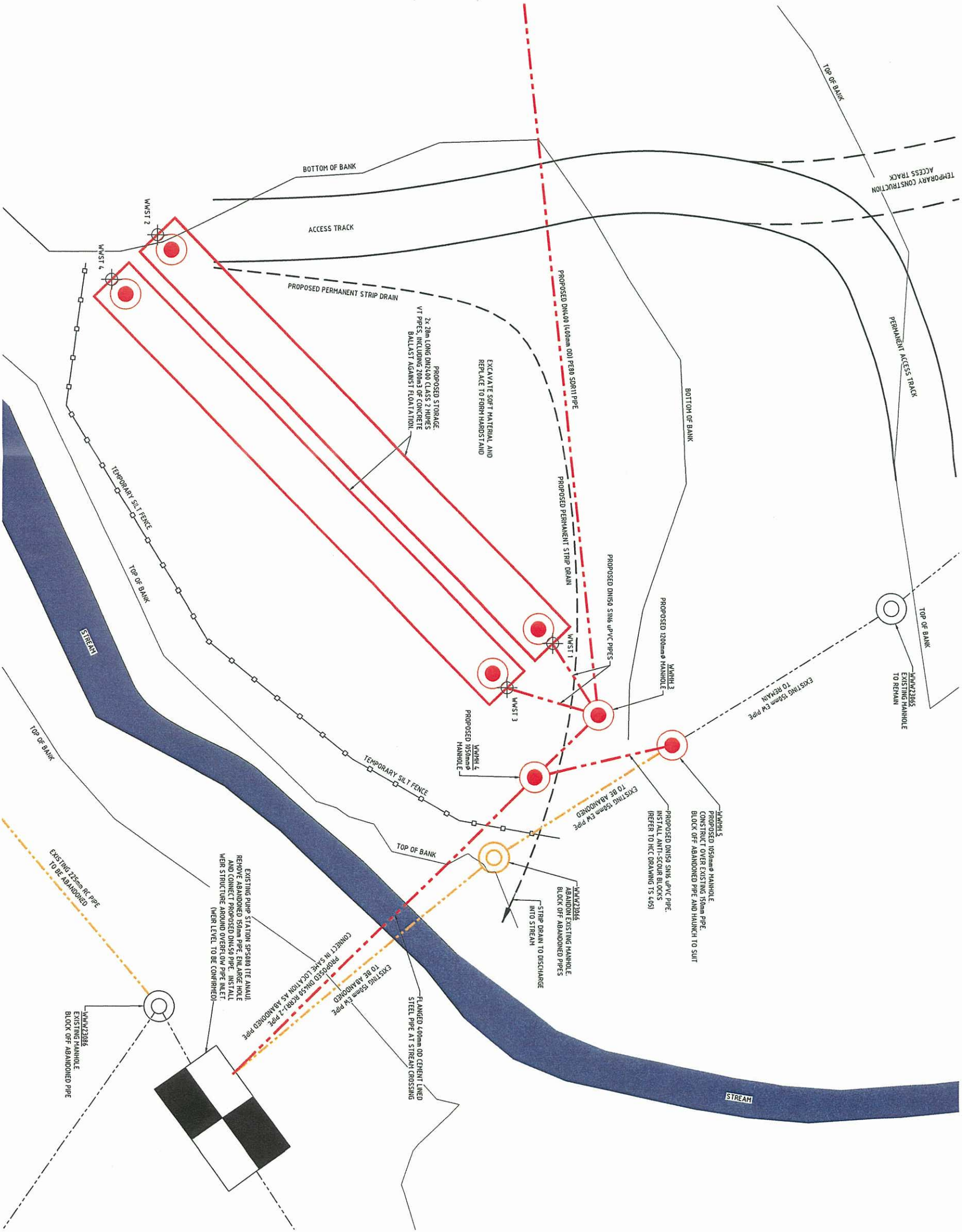


NOTES

- THESE DRAWINGS FORM PART OF THE CONTRACT DOCUMENTS FOR THE WORK AND SHALL BE READ IN CONJUNCTION WITH THE SPECIFICATION AND ALL OTHER CONTRACT DOCUMENTS.
- DO NOT SCALE THE DRAWINGS.
- COORDINATES ARE IN TERMS OF AT ECHY CIRCUIT 2000. ORIGIN OF LEVELS IS IN TERMS OF NGVD DATUM.
- ALL WORK IS TO BE IN ACCORDANCE WITH HCC DEVELOPMENT MANUAL, VOLUME 3, STANDARD TECHNICAL SPECIFICATIONS.
- PIPES, CABLES AND OTHER UTILITIES, FOUNDATIONS, LEVELS, REFERENCE MARKS AND OTHER OBSTRUCTIONS INDICATED ON THIS DRAWING ARE BASED ONLY ON READING AVAILABLE RECORD PLANS AND OTHER INFORMATION. THIS INFORMATION MAY NOT BE COMPLETE, ACCURATE NOR UP TO DATE. PRIOR TO CARRYING OUT ANY EXCAVATION OR OTHER PHYSICAL WORK, CONTRACTORS SHALL OBTAIN THE LATEST INFORMATION FROM UTILITY PROVIDERS AND CARRY OUT DETAILED EXPLORATORY WORK, TRACING, LOCATING, SECTION, LOCATION AND ALTERATIONS AS ARE REQUIRED UNDER MCS 3100 CLAUSE 5.13.

SETOUT COORDINATES

ITEM	LN	NE
WMH 3	695346.98	446774.37
WMH 4	695346.12	446778.64
WMH 5	695350.09	446771.95
WMH 23065	695349.53	446759.18
WMH 23066	695350.54	446782.34
SPS 080	695353.52	446798.91
WMST 1	695342.78	446774.58
WMST 2	695351.67	446781.59
WMST 3	695343.57	446777.83
WMST 4	695346.46	446784.84



DETAIL  
SCALE 1: 100  
1  
C200

NOT FOR CONSTRUCTION

Name	Date
SURVEYED	-
DESIGNED	-
DESIGN CHECK	-
DRAWN	C. Hume 02/2010
DRAWING CHECK	C. Hardy 03/2010
APPROVED	3/7/10



TE ANAU PARK  
SEWER REALIGNMENT  
GRAVITY PIPELINE & STORAGE  
PLAN OF STORAGE CONSTRUCTION AREA

DRAFT

Scale	Sheet No.	Rev.
Scale (A1) 1:100	03/03/2010	B
Scale (A1) 1:100	20/08/05A9	C201